

GET INVOLVED



Donate to support

Your contributions go directly to providing school supplies, nutritious meals, and healthcare services for children and families in need. Just \$50 can feed a child for a month, and \$100 equips a student with uniforms and books



Become a Volunteer

Your time and skills bring hope to students and families. Whether mentoring, organizing, or supporting events, your efforts make a lasting difference.



Become Partner

Collaborate with us to expand access to education and healthcare. Whether you're a business, nonprofit, or community organization, together we can amplify our impact and create lasting change.



WHO WE ARE

Lady of Fatima Health & Educational Services empowers children and youth in Sierra Leone by breaking barriers to education, health, and opportunity. Through community-driven programs, we provide the tools and support needed to build brighter futures



OUR MISSION

We provide communities with access to education, healthcare, and essential resources, empowering individuals to grow, thrive, and build sustainable futures



OUR VISION

We envision a world where equitable access to education and healthcare empowers resilient communities to thrive and build sustainable futures.



LADY OF FATIMA
Health and Educational Service



CONTACT US!

+123-456-7890
hello@reallygreatsite.com
reallygreatsite.com

YOUR DONATION IMPACTS REAL CHANGE

Every contribution helps break barriers and build brighter futures. Together, we can ensure that children have access to education, families receive critical healthcare, and individuals gain the resources they need to thrive

Impact Examples:

- **\$25:** Provides a student with a backpack and school supplies.
- **\$50:** Covers nutritious meals for a child for one month.
- **\$100:** Funds a wheelchair, restoring mobility and independence.
- **\$250:** Supports vocational training for one individual, paving the way for economic empowerment

DONATION METHODS:

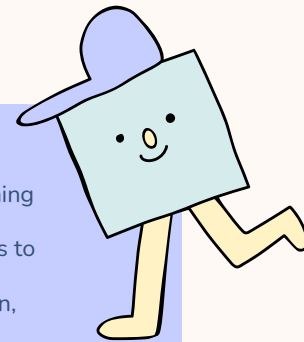
1. Online: Visit

<https://ladyoffatimanonprofit.org>

2. By Mail: Send checks payable to:

**Lady of Fatima Health &
Educational Services**

Our work is rooted in the belief that every individual deserves the chance to thrive. Through education, health services, and essential support, we create lasting change that strengthens communities and transforms lives



WHAT WE DO

EDUCATION

We provide children with safe, supportive environments where they can grow academically, socially, and emotionally. Through after-school programs and essential school supplies, we remove barriers and create opportunities for success

ACCESS TO MODERN TECHNOLOGY

By offering digital literacy training and access to technology, we empower students and families to connect to the modern world, unlocking opportunities to learn, grow, and succeed

TRANSPORTATION

Through the provision of wheelchairs and assistive devices, we empower individuals with disabilities to participate fully in education, work, and community life

NUTRITION

We ensure children have access to nutritious meals before and after school, giving them the energy they need to learn, grow, and succeed.

HEALTHCARE

Our programs focus on improving access to care, raising awareness, and supporting physical and mental well-being for children and families, enabling them to thrive.

ECONOMIC EMPOWERMENT

We equip individuals with vocational skills and entrepreneurship training, helping them break cycles of poverty and create long-term economic independence

